

Specification

Lithium Polymer Battery Pack (LP603040) 650mAh 3.7V with Protection Circuit Module (PCM)

This data sheet describes the requirements and properties of lithium polymer rechargeable battery pack manufactured by AKYGA

Mechanical Characteristics

Type number: LP603040
 Designation IEC system: Lithium polymer battery pack
 Length: $40 \pm 0.4\text{mm}$
 Width: $30 \pm 0.4\text{mm}$
 Thickness: $6.0 \pm 0.2\text{mm}$
 Cable: $150 \pm 3.0\text{mm}$ (26AWG UL 1007)
 Weight: appr. 15.0g
 Connector: JST 2.54 male & female connectors

Electrical Specification

Rated capacity: 650mAh min, 670mAh typ.
 Nominal voltage: 3.7V
 Max. operating voltage range: 3.0V to 4.2V
 Charge voltage: $4.2 \pm 50\text{mV}$
 Initial charge current: Standard charge: 325mA
 Rapid charge: 650mA
 Charging cut-off (A or B)
 A) By time: Standard charge: 2 hours
 Rapid charge: 1 hours
 B) By min. current: 13mA
 Max continuous discharge current: 650mA
 Exp. cycle life: >500 cycles >80% of initial cap. (0.5C/0.5C)
 Internal impedance (1kHz): approx 55mOhm
 Cell protection
 Overcharge detection: $4.325 \pm 25\text{mV}$
 (0.5 to 2.0 sec. delay, resume $4.075 \pm 50\text{mV}$)
 Overdischarge detection: $3.00\text{V} \pm 25\text{mV}$
 (6.25 to 250msec. delay, resume $2.9\text{V} \pm 100\text{mV}$)

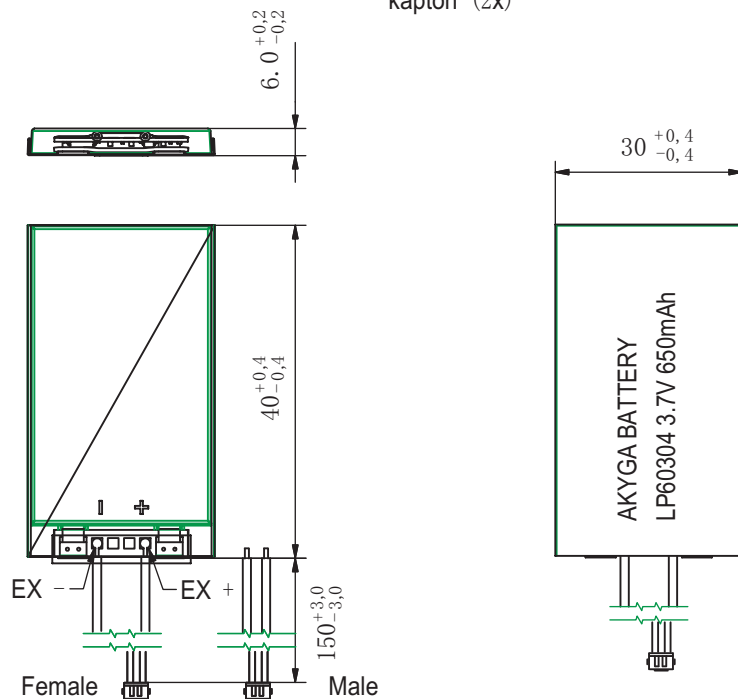
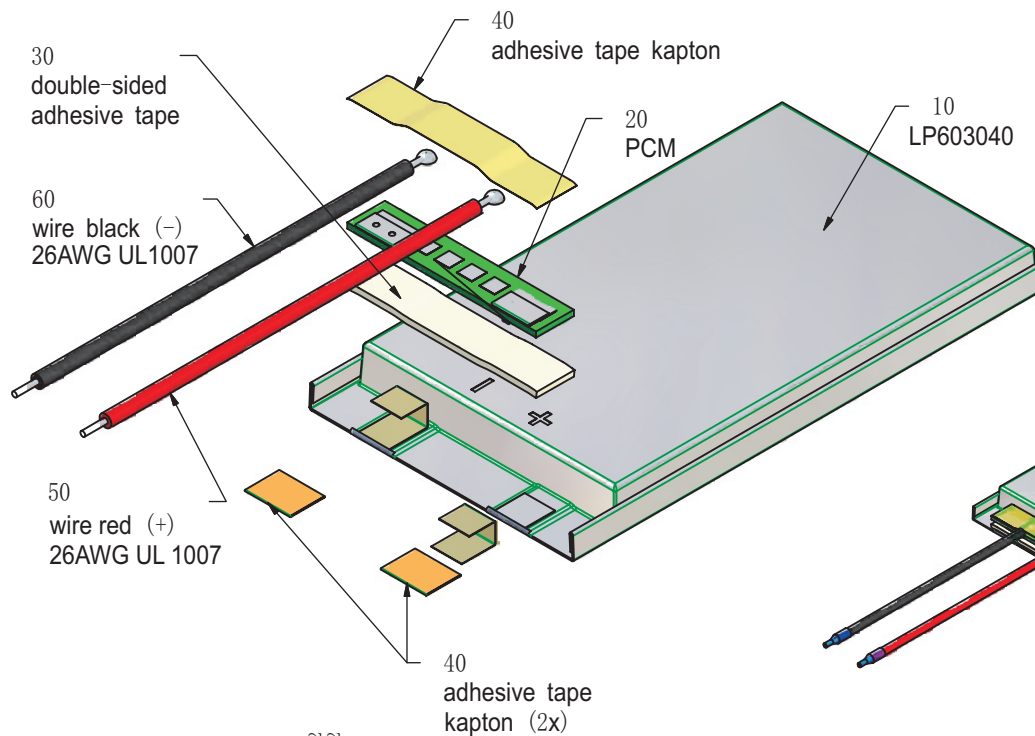
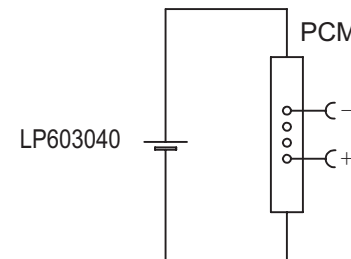
Ambient conditions

Temperature range
 Charge: 0 to $+45^\circ\text{C}$
 Discharge: -20 to $+60^\circ\text{C}$
 Charge retention/Storage: 1 year at -20 to 20°C >70%
 3 month at -20 to 45°C > 70%
 1 month at -20 to 60°C > 70%

Safety

Please follow handing and Safety Precautions Poliflex.

Circuit diagram



| Index | Alteration | | Date | Name |
|--|---|---|------------------------|------------------|
| Projection: | | Diese Mae werden besonders geprüf This dimensions are considered inspectable | Material: 6645175 6819 | |
| Mae in mm | Freimtoleranzen | Date | Name | |
| All dimensions in mm | Generaltoleranzen | Erst./Orig. 12.08.2013 | Xie Qingfang | |
| Als Betriebsgeheimnis anvertraut, alle Rechte vorbehalten. | up to 6 : 0,1 over 6 up to 30 : 0,2 | Bearb./Design Gepr./Check: 12.08.2013 | Guo Daxia | |
| Proprietary data, company confidential, all rights reserved. | over 30 up to 100 : 0,3 over 100 : 0,5 | Benennung/Designation | | Zchng. / Dwg.Nr. |
| | | LP603040 | | 3 FD_2566_20 |
| | | Origin: | | Index |

