

Specification

Lithium Polymer Battery Pack (LP3867100) 2400mAh 3.7V with Protection Circuit Module (PCM)
 This data sheet describes the requirements and properties of lithium polymer rechargeable battery pack manufactured by AKYGA

Mechanical Characteristics

Type number: LP3867100
 Designation IEC system: Lithium polymer battery pack
 Length: $100 \pm 0.4\text{mm}$
 Width: $67 \pm 0.4\text{mm}$
 Thickness: $3.8 \pm 0.2\text{mm}$
 Cable: $150 \pm 3.0\text{mm}$ (26AWG UL 1007)
 Weight: appr. 42.0g
 Connector: JST 2.54 male & female connectors

Electrical Specification

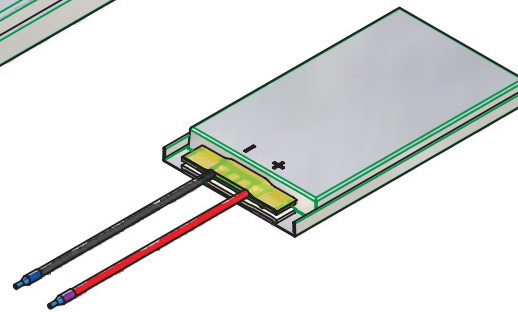
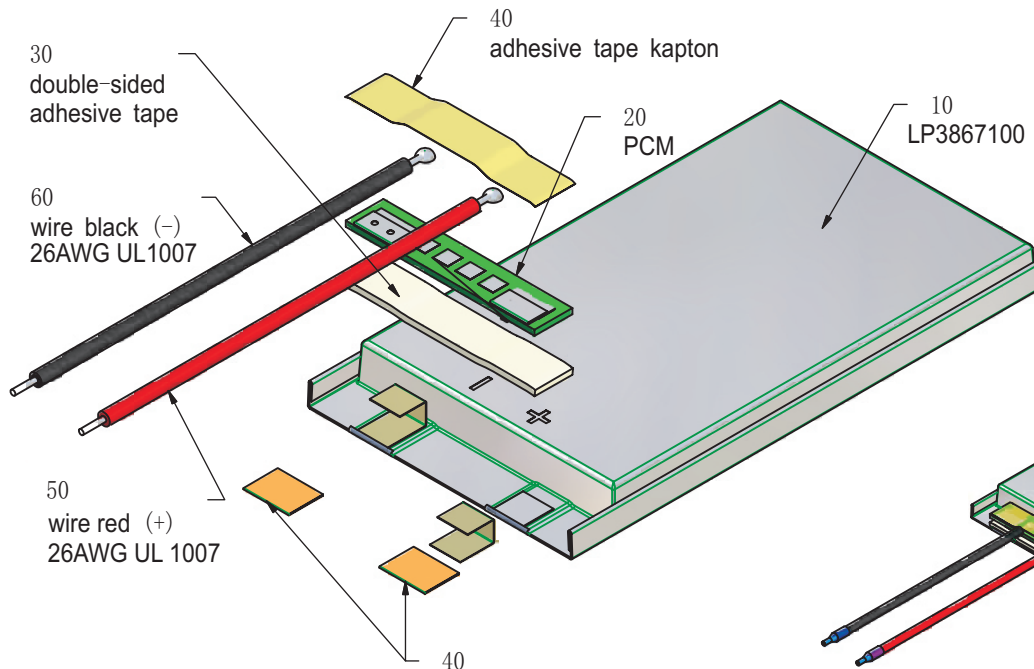
Rated capacity: 2400mAh min, 2440mAh typ.
 Nominal voltage: 3.7V
 Max. operating voltage range: 3.0V to 4.2V
 Charge voltage: $4.2 \pm 50\text{mV}$
 Initial charge current: Standard charge: 1200mA
 Rapid charge: 2400mA
 Charging cut-off (A or B)
 A) By time: Standard charge: 7 hours
 Rapid charge: 4 hours
 B) By min. current: 48.0mA
 Max continuous discharge current: 2400mA
 Exp. cycle life: >500 cycles >70% of initial cap. (0.5C/0.5C)
 Internal impedance (1kHz): approx 36mOhm
 Cell protection
 Overcharge detection: $4.325 \pm 25\text{mV}$
 (0.5 to 2.0 sec. delay, resume $4.075 \pm 50\text{mV}$)
 Overdischarge detection: $3.00\text{V} \pm 25\text{mV}$
 (6.25 to 250msec. delay, resume $2.9\text{V} \pm 100\text{mV}$)

Ambient conditions

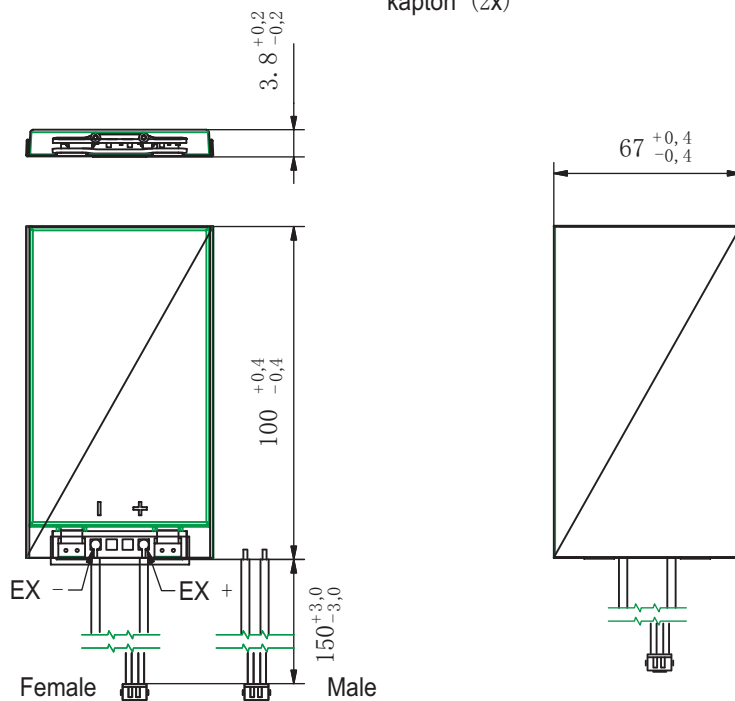
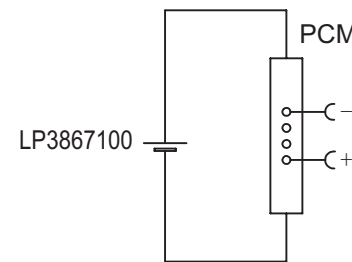
Temperature range
 Charge: 0 to $+45^\circ\text{C}$
 Discharge: -20 to $+60^\circ\text{C}$
 Charge retention/Storage: 1 year at -20 to 20°C >70%
 3 month at -20 to 45°C >70%
 1 month at -20 to 60°C >70%

Safety

Please follow handling and Safety Precautions Poliflex.



Circuit diagram



Index		Alteration		Date	Name
Projection:		Diese Mae werden besonders gepruft This dimensions are considered inspectable		Material	
Mae in mm All dimensions in mm		Freimatoleranzen Generaltolerances		Date	
Als Betriebsgeheimnis anvertraut, alle Rechte vorbehalten.		up to 6 ' 0,1 over 6 up to 30 ' 0,2 over 30 up to 100 ' 0,3 over 100 ' 0,5		Erst./Orig. 12. 08. 2013 Xie Qingfang Beab./Desig Gepr./Check 12. 08. 2013 Guo Daxia	
Proprietary data, company confidential, all rights reserved.		Benennung/Designation		Zchg. / Dwg. Nr.	
		LP3867100		3 FD_2566_18	
		Origin:		Index	

