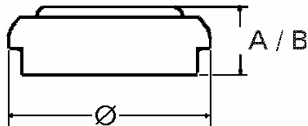


**Data Sheet**

**Type Number** ..... 4626  
**Designation IEC** ..... LR 9  
**System** ..... Manganese Dioxide /  
 Zinc / KOH - Electrolyte



**Nominal Voltage** ..... 1,5 V  
**Typical Capacity C** ..... 200 mAh  
 Load 300 Ohm, at 20°C down to 0.9 V

**Weight (approx.)** ..... 3,3 g  
**Volume** ..... 1,01 ccm  
**Coding**..... Manufacturing Month/Year by  
 Letter Code

**Temperature Ranges** min max.  
 Storage ..... -10°C 65 °C  
 Discharge ..... -10°C 65°C

**Dimensions** min max.  
 Diameter ... 15 15,5  
 Height (A/B) ..... 5,6 6,1

**Segment** ..... Photo

**Main Applications** ..... Photo  
 Electronic  
 Car Alarm

**Typical Capacities (at 20°C)**

Discharge Type	Load	End Voltage:	0.9 V
Continuous 24h/d,7d/w Current [µA]:	300 Ω  5000	Time: Capacity [mAh]: Energy [MWh]:	48 h 200 250

All Data contained herein is for single cells

For battery applications, performance data may vary from single cell data, depending on specific battery configuration

VARTA Microbattery GmbH, Daimlerstr. 1, D-73479 Ellwangen/Jagst  
 Tel.: (+49) 7961/921-0, Telefax: (+49) 7961/921-553

Subject to change without prior notice!  
 Date of issue: 16.09.2003